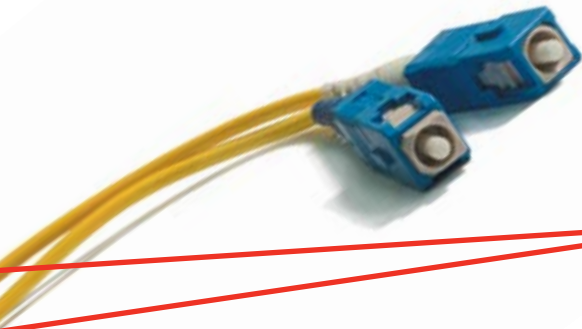


Point-to-Point SDH Services



Nextgen's 'Point-to-Point SDH' services are premium performance, low latency, carrier grade SDH transmission services with interstate and local coverage.

Speeds and Interfaces

Our network offers a wide range of standard SDH speeds, from 50Mbit/s (VC3) to 9600Mbit/s (VC4-64c), ensuring ability to cater to your current and future needs. We offer increments as fine as 150Mbit/s (VC4) so that customer incremental costs can be managed.

Standard interfaces range from STM-1 to STM-64. Multiple sub-rate circuits can be delivered to a single physical interface to reduce equipment costs and complexity.

24x7 Network Monitoring

Nextgen's Service Management Centre provides ongoing end-to-end monitoring around the clock for our national network. All SDH elements are actively monitored and our in-line fibre monitoring system can pin-point fibre faults to within a couple of metres across the country. Our technicians are on call to fix the faults any time of the day or night.

Robust Network

Nextgen's network is designed and configured for continual operation, with a rebate-backed network commitment of 99.95% per month. Geographic fibre diversity on the east coast is provided by our own fibre. We have electronic and fibre diversity from Melbourne to Perth, with geographic fibre diversity provided through a third party. All of our main switching nodes have on-site spares and we have primary and backup service management centres.

Depending on your business requirements, we can customise access solutions with different levels of redundancy up to and including geographic diversity with dual building entries.

Point-to-Point SDH Services

Suitable for carriers and corporations requiring uncompromising quality, Nextgen's Point to Point SDH services are available with dedicated circuit switched bandwidth ranging from 50Mbit/s (VC3) to 9600Mbit/s (VC4-64c). Our core network is built from SDH rings with 50ms protection switching and we offer a range of access circuit protection options. For efficiencies of scale, we are able to multiplex a number of sub-rate services onto our STM-n interfaces.

Nextgen's Fibre Network

Nextgen owns and operates the third largest national fibre network in Australia, which is fully redundant on all routes and geographically diverse on the east coast. Our in-line fibre monitoring system gives us the ability to pinpoint trouble spots rapidly to within a few metres. The result is a high reliability network with maximum network availability.

Target Applications

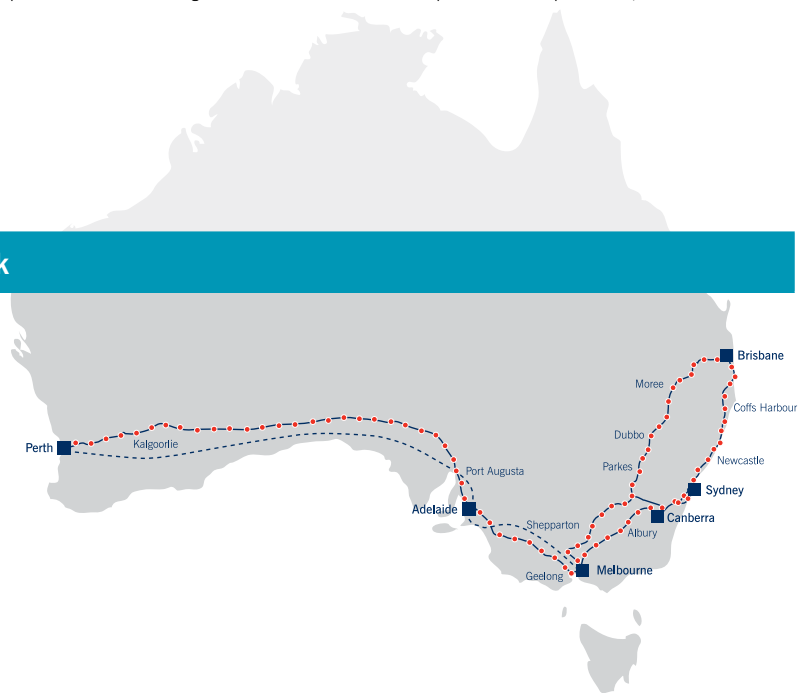
Nextgen's SDH services are suitable for a wide range of applications:

- Interstate and Local Transmission
- Data Centre Interconnection
- ATM Switch Interconnection
- Channelised Transmission

Service Parameter	Point to Point SDH
Interface Rates	SDH: STM-1, STM-4, STM-16, STM-64
Frame Structure	ITU-T G.707 (VC-3's map into higher groups via TUG-3)
Interface Type	SDH Standard Optical Interfaces Distance dependent and advised during our design phase
Physical Interface	Single Mode Fibre Optical SC Flat
Preferred Speeds Other Speeds Available On Request	STM-1: n x VC3, VC4 STM-4: n x VC4, VC4-4c STM-16: n x VC4, n x VC4-4c, VC4-16c STM-64: n x VC4, n x VC4-4c, n x VC4-16c, VC4-64c
Interface Features Supported	As per ITU-T G.707 Standards based SDH features Guaranteed bandwidth
Latency	Optical delay plus small mapping delay
Jitter and Wander	ITU-T G.825
Bit Error Rate (End to End)	< 10 ⁻¹⁰
Network Availability	End to End: 99.95% for default service configuration
Core Protection	Default: SNCP Fully Redundant Non-Revertive [1] Options: Unprotected, SNCP Fully Redundant Revertive
Access Protection	Default: Unprotected Customisable Options Available
Commissioning Standard	ITU-T M.2101
Customer Site Requirements	Rack space and 240V AC 50Hz power to be provided by the customer

[1] SNCP (Sub Network Connection Protection) provides complete path protection at the SDH layer using redundant fibre. 'Non-Revertive' switching means that the active route only changes in response to a fault, which minimises the number of interruptions. 'Revertive' switching means that the active route has a preference for a specific fibre, and so will switch back (revert) once the preferred path has been repaired.

The Nextgen Australian Fibre Network



ABOUT NEXTGEN NETWORKS

Nextgen Networks is a national Telecommunications carrier that specialises in high performance data services. Our customers are other Corporations, Government, Service Providers and other Carriers. Nextgen products include high capacity data transmission services ranging from corporate links up to complete wavelengths, nationwide multipoint Ethernet networks (VPLS Service), Internet, satellite and carrier grade co-location offerings. Nextgen owns and operates infrastructure that includes the third largest fibre network in Australia, a latest generation national switched Ethernet data network and co-location centres throughout Australia. Nextgen is a wholly owned subsidiary of the Leighton Group.

Check out the benefits of our award winning data solutions

Phone: 1300 653 351

www.nextgennetworks.com.au